

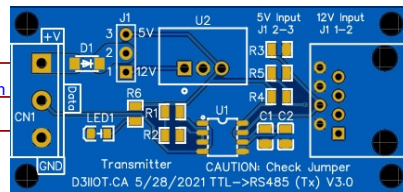
12V Power Supply



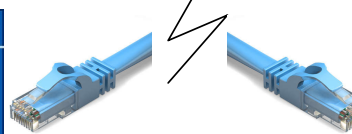
12V Power Supply



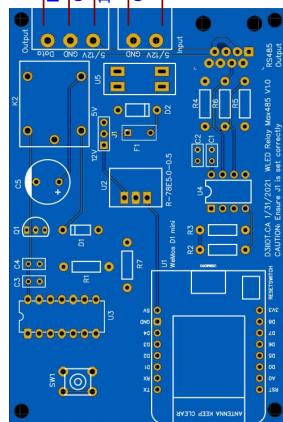
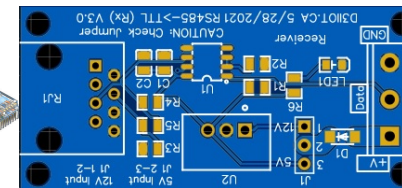
D3IIOT TTL->RS485 Transmitter



Up to >1km



D3IIOT RS485->TTL Receiver



Addressable LED Controller



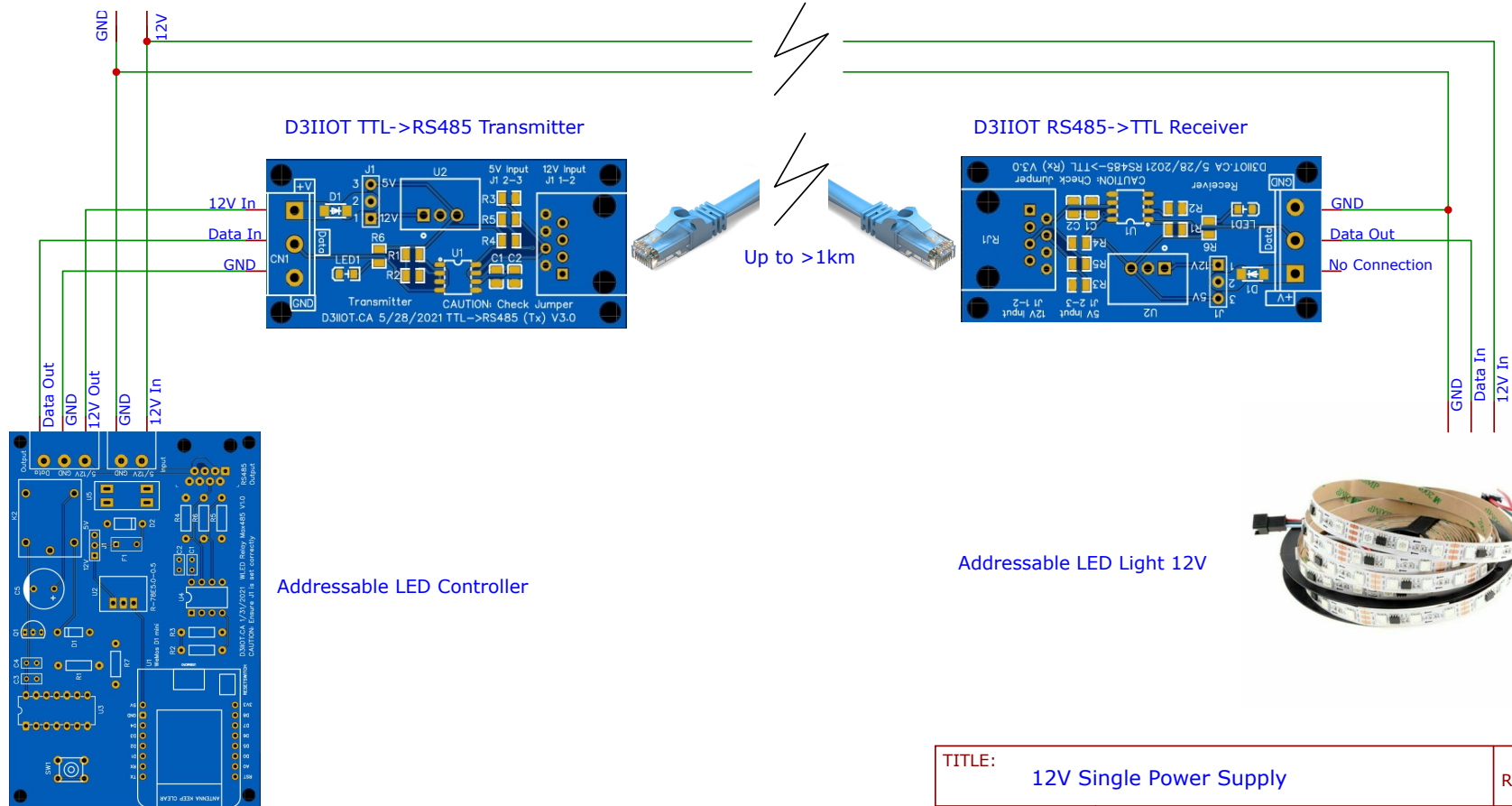
Addressable LED Light 12V

|                                |                  |                     |
|--------------------------------|------------------|---------------------|
| TITLE: 12V Dual Power Supplies |                  | REV: 1.0            |
| EasyEDA                        | Company: D3IIOT  | Sheet: 1/1          |
|                                | Date: 2021-05-13 | Drawn By: DrDigital |



12V Power Supply

Distance depends on current draw and wire size



D3IIOT TTL->RS485 Transmitter

D3IIOT RS485->TTL Receiver

Addressable LED Controller

Addressable LED Light 12V

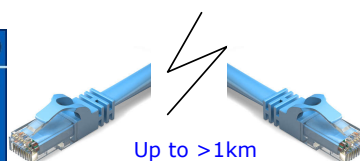
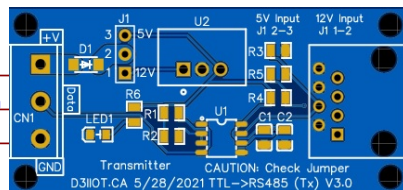
|                                |                  |                     |
|--------------------------------|------------------|---------------------|
| TITLE: 12V Single Power Supply |                  | REV: 1.0            |
| EasyEDA                        | Company: D3IIOT  | Sheet: 1/1          |
|                                | Date: 2021-05-14 | Drawn By: DrDigital |

This configuration allows placement of the 12V power supply close to the LED strip and will backfeed power to the controller via the RS485 ethernet link.

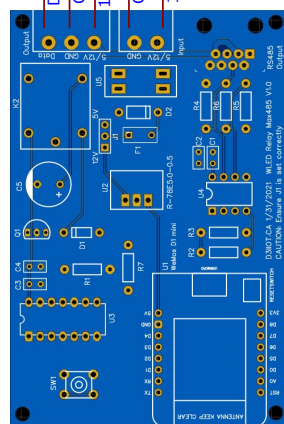
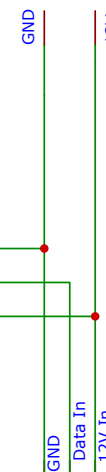
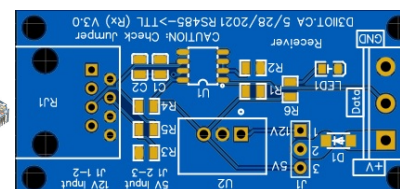
12V Power Supply



D3IIOT TTL->RS485 Transmitter



D3IIOT RS485->TTL Receiver



Addressable LED Controller

Addressable LED Light 12V



|                                      |                  |                     |
|--------------------------------------|------------------|---------------------|
| TITLE: 12V Single Power Supply - Alt |                  | REV: 1.0            |
| EasyEDA                              | Company: D3IIOT  | Sheet: 1/1          |
|                                      | Date: 2021-05-14 | Drawn By: DrDigital |

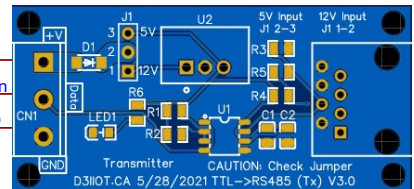


5V Power Supply

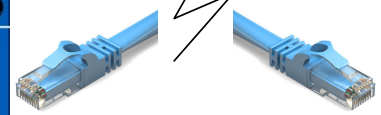


5V Power Supply

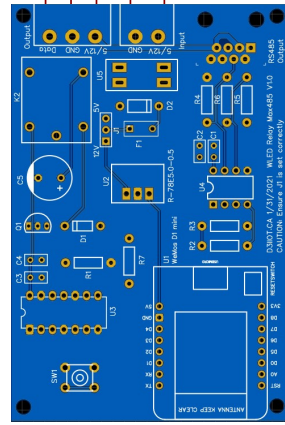
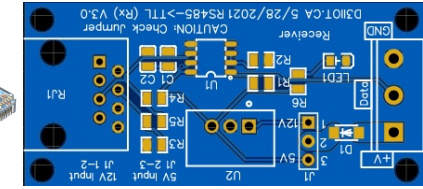
D3IIOT TTL->RS485 Transmitter



Up to >1km



D3IIOT RS485->TTL Receiver



Addressable LED Controller



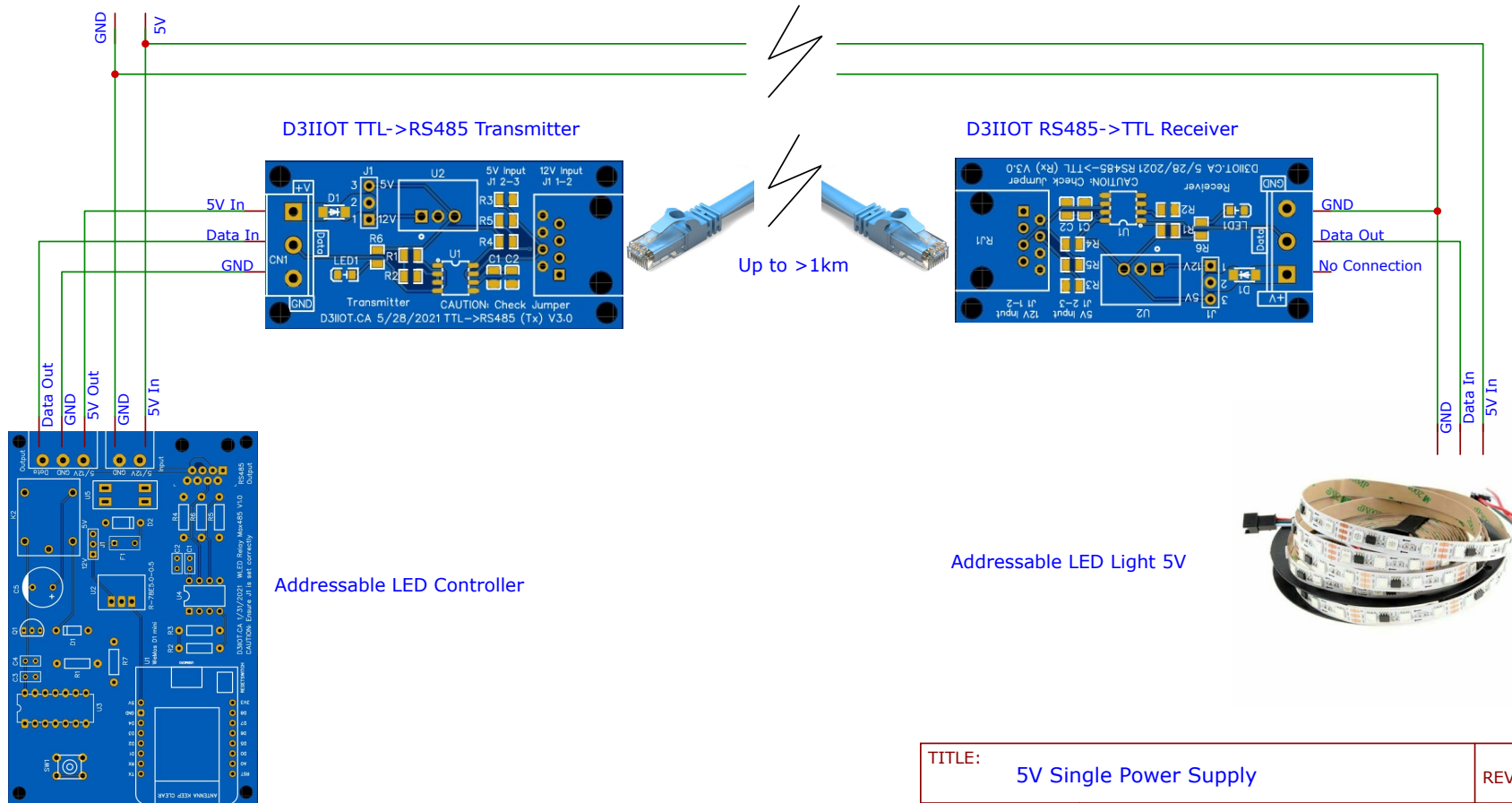
Addressable LED Light 5V

|                               |                  |                     |
|-------------------------------|------------------|---------------------|
| TITLE: Dual 5V Power Supplies |                  | REV: 1.0            |
| EasyEDA                       | Company: D3IIOT  | Sheet: 1/1          |
|                               | Date: 2021-05-14 | Drawn By: DrDigital |



5V Power Supply

Distance depends on current draw and wire size



|                               |                  |                     |
|-------------------------------|------------------|---------------------|
| TITLE: 5V Single Power Supply |                  | REV: 1.0            |
| EasyEDA                       | Company: D3IIOT  | Sheet: 1/1          |
|                               | Date: 2021-05-14 | Drawn By: DrDigital |

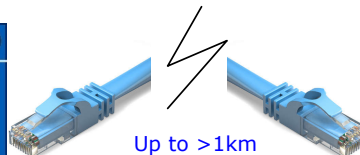
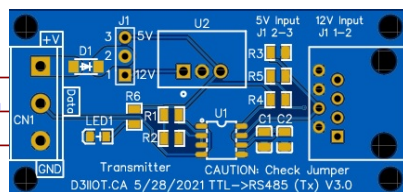


This configuration allows placement of the 5V power supply close to the LED strip and will backfeed power to the controller via the RS485 ethernet link.  
NOTE: If there is too much voltage drop this may cause an issue for the controller.

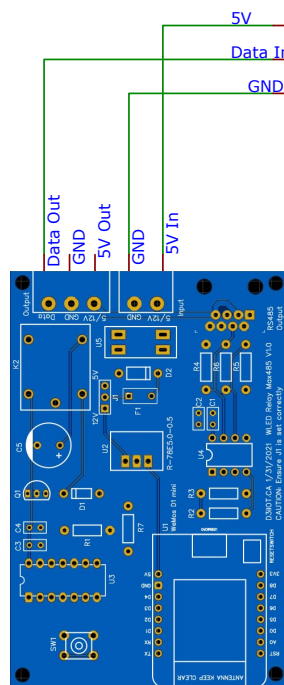
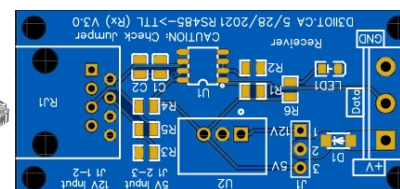
5V Power Supply



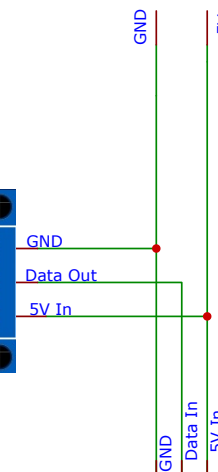
D3IIOT TTL->RS485 Transmitter



D3IIOT RS485->TTL Receiver



Addressable LED Controller



Addressable LED Light 5V



|                                     |                  |                     |
|-------------------------------------|------------------|---------------------|
| TITLE: 5V Single Power Supply - Alt |                  | REV: 1.0            |
| EasyEDA                             | Company: D3IIOT  | Sheet: 1/1          |
|                                     | Date: 2021-05-14 | Drawn By: DrDigital |